



THE Eco-\$mart Modular  
ECO-460  
460 Sq Ft. 2 Bedrooms 1 Bathroom

**Eco-\$mart MODULAR HOMES:**

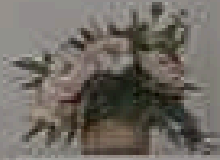
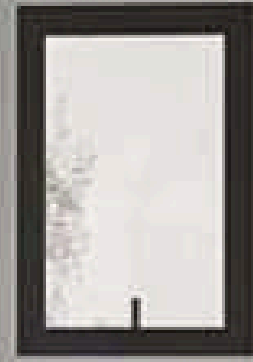
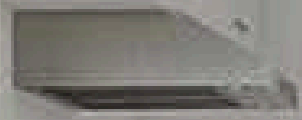
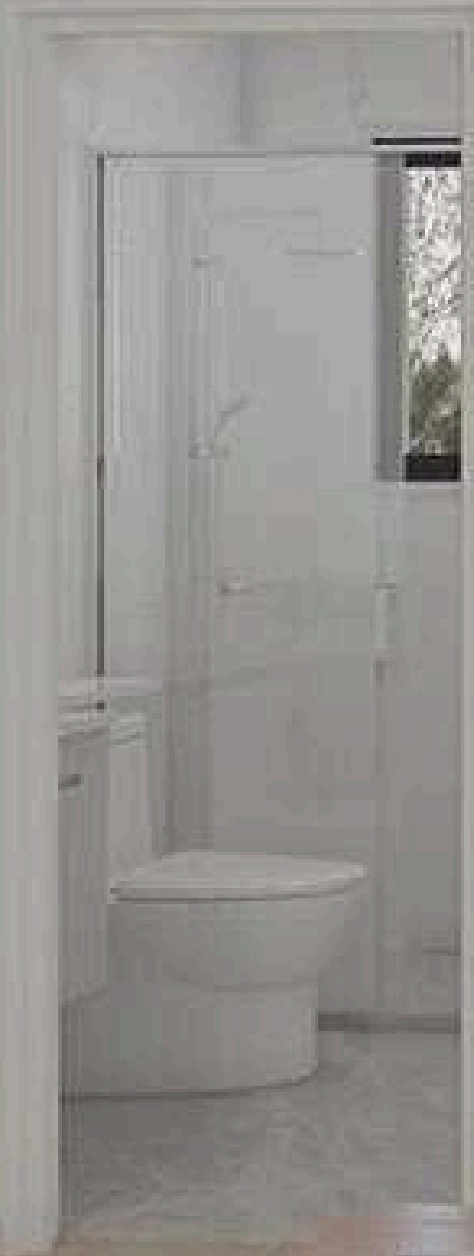
ENGINEERED FOR EFFICIENCY  
STEEL FRAMED CONSTRUCTION  
INNOVATIVE DESIGN  
SUSTAINABLE TECHNOLOGY  
&  
ENERGY EFFICIENT



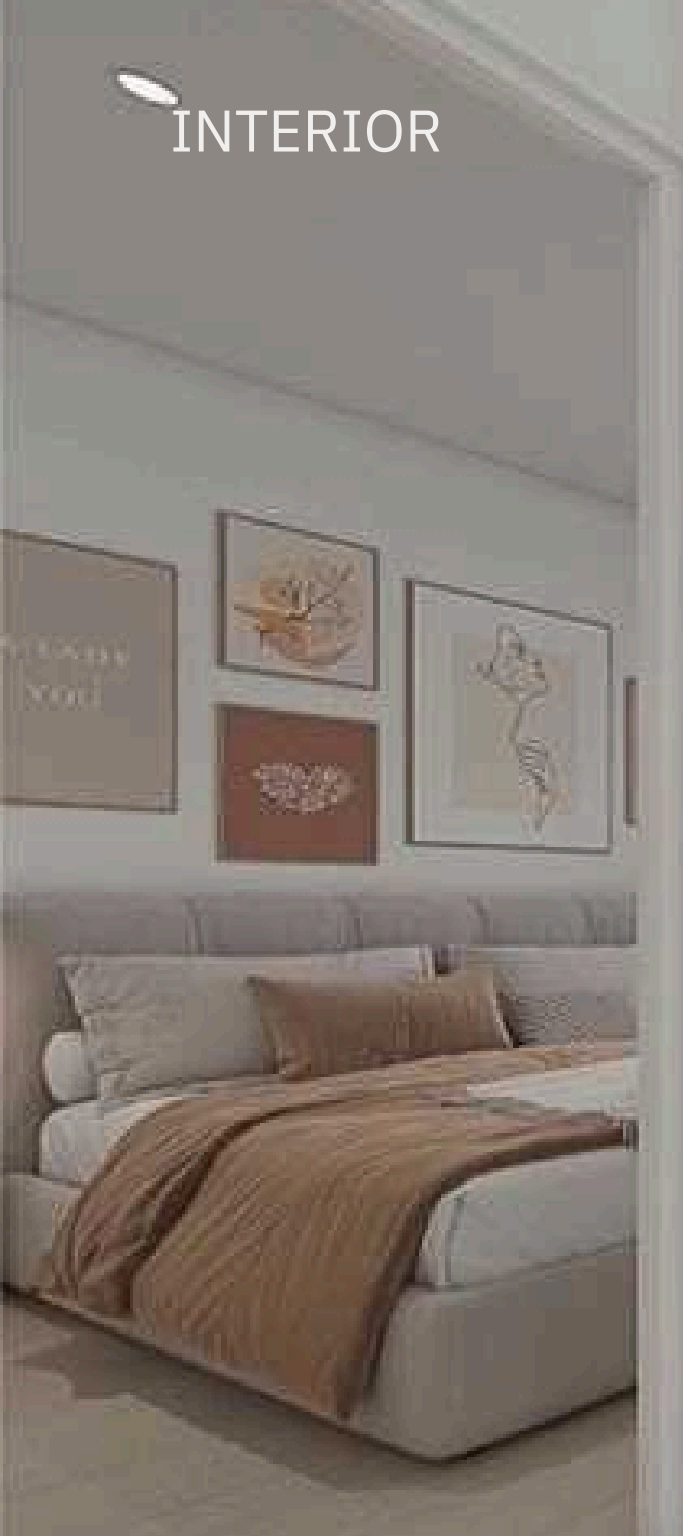
LIVING AREA



# KITCHEN



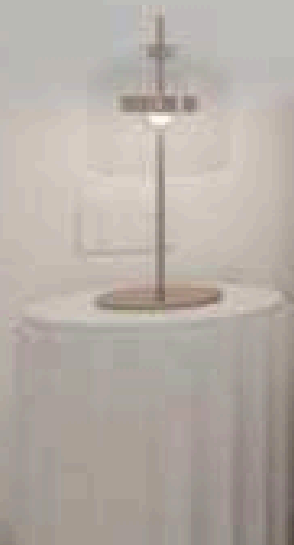
INTERIOR



# MAIN BEDROOM



2ND BEDROOM



# KITCHEN AREA



CHOOSE YOUR Home Design

# Eco-460 Model



**ROOFTOP DECK**

Seamless Housing Solution



**FLAT ROOF**

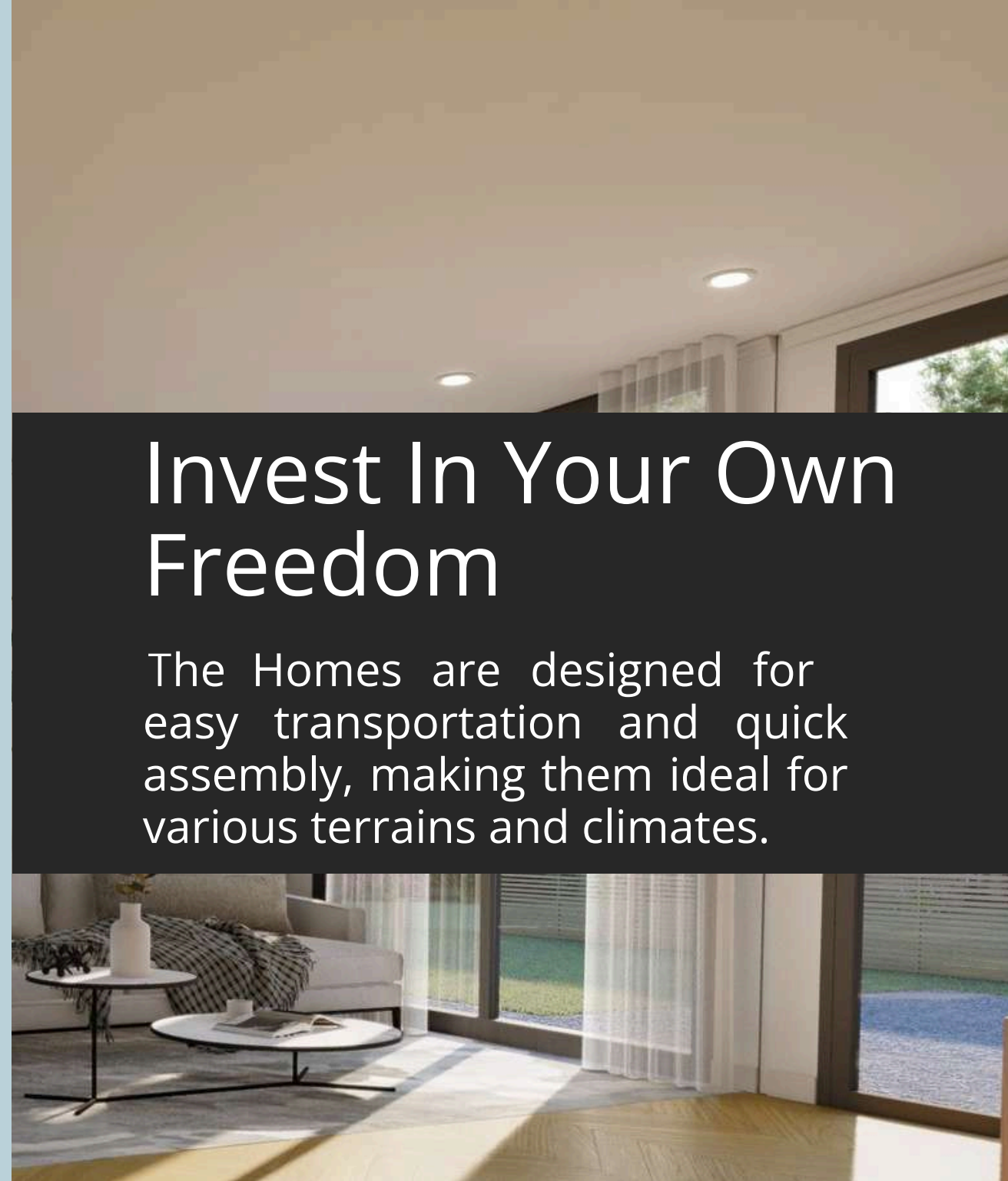
Global Reach & Integration



**SIDE PITCHED ROOF**

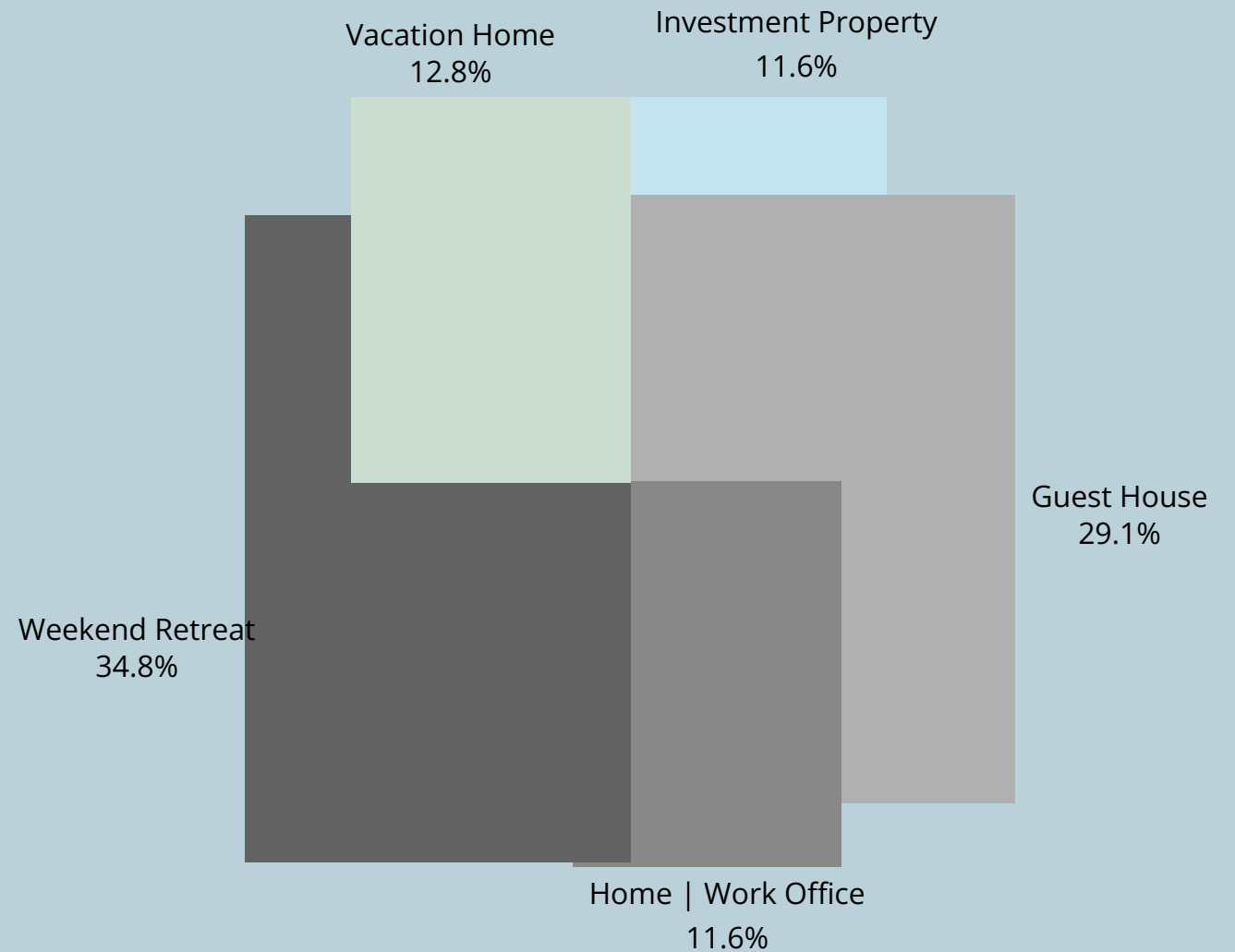
Urban & Rural Terrain Adaptability

## 460 Sq Ft. 2 Bedrooms 1 Bathroom



# Invest In Your Own Freedom

The Homes are designed for easy transportation and quick assembly, making them ideal for various terrains and climates.



460 sq ft. 2 Bedroom 1 Bathroom



RAPID INSTALLATION:  
8-HOUR ASSEMBLY

SOUND  
PROOFING: >60DB

ANTI-CORROSION: 20 YEARS

SNOW LOAD  
CAPACITY: 1KN/M2

WIND  
RESISTANCE: 185

mph  
SERVICE LIFE:  
100 YEARS

SEISMIC  
RESISTANCE: GRADE 9

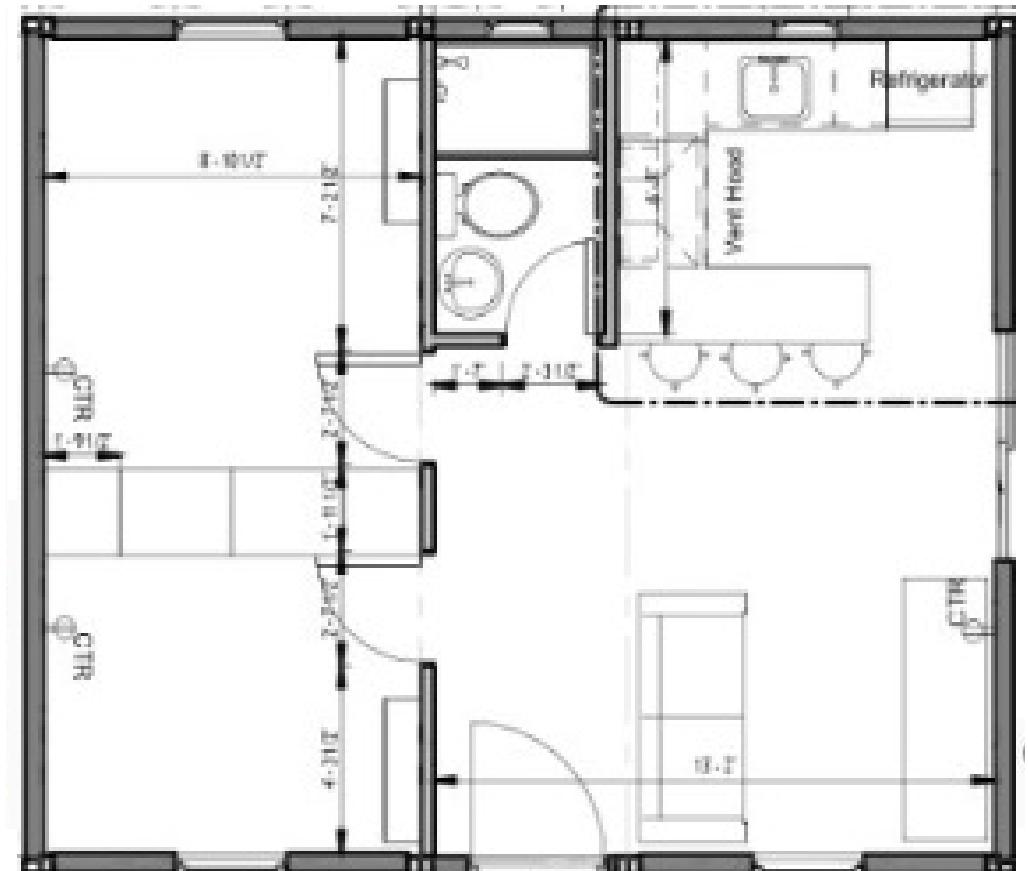
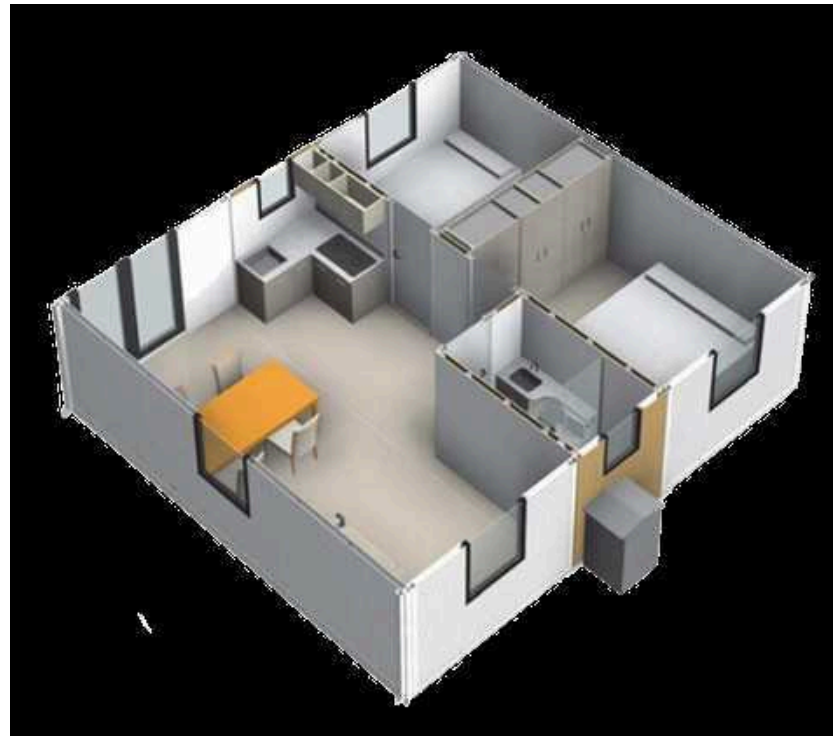
FIRE RESISTANCE:  
GRADE 3 (0.5 HOURS)



21.8ft

8.39ft

- 460 SQ FT**
- 2 BEDROOMS
- 1 BATHROOM
- 1 KITCHEN
- 1 LIVING ROOM

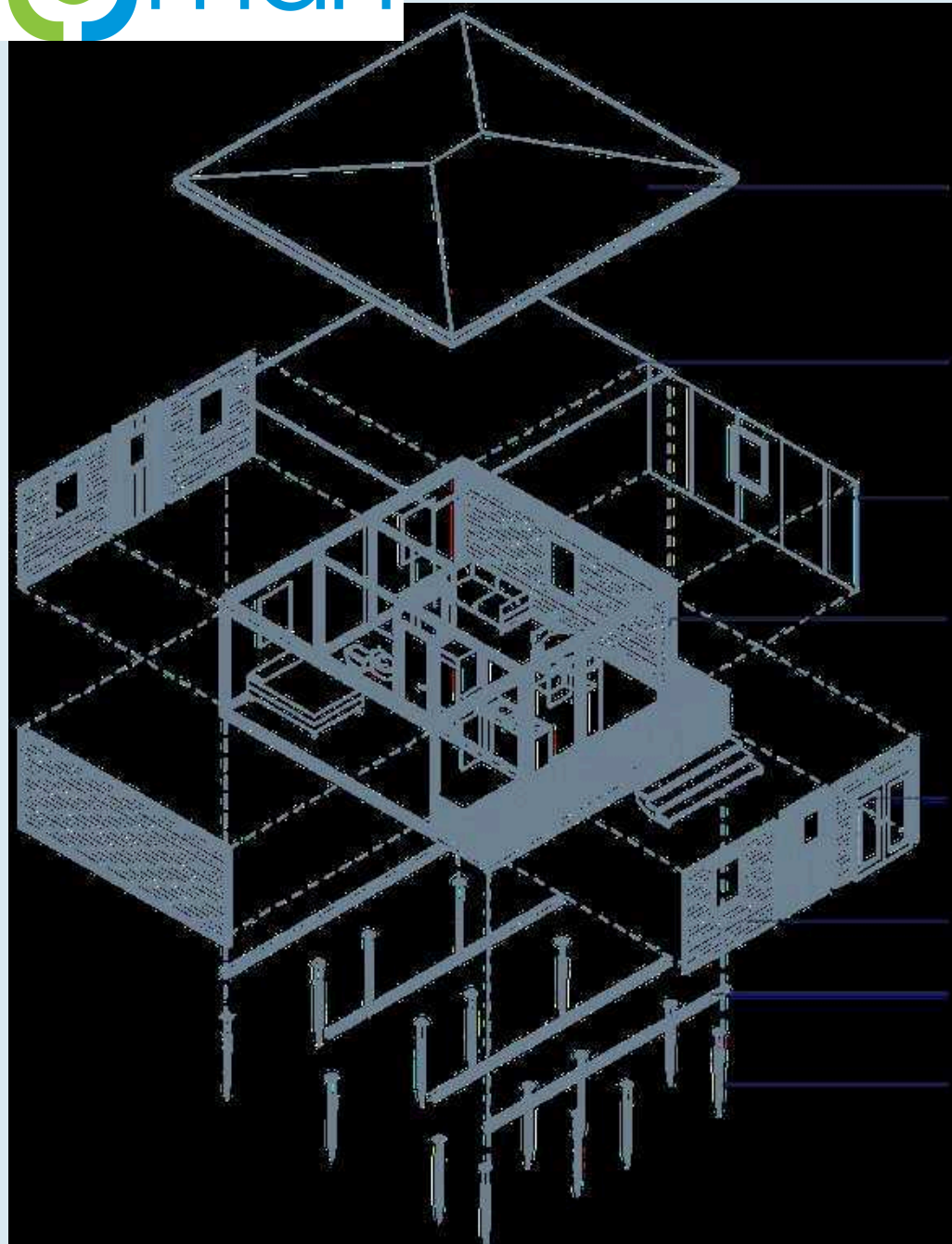




KITCHEN PLAN  
1/2" = 1'-0"



KITCHEN SECTION



## STRUCTURAL COMPONENTS

ASPHALT SHINGLE ROOF  
ON METAL FRAMED TRUSS

80MM HIGH DENSITY PU PANEL INSULATION  
WITH 9MM BAMBOO AND WOOD DECORATION PANEL

EXTERIOR WALL-  
0.45MM HIGH WEATHER RESISTANT COLOR STEEL PANEL  
75MM HIGH DENSITY PU PANELS  
9MM BAMBOO AND WOOD ECOLOGICAL DECORATION PANEL

STEEL STRUCTURAL POST

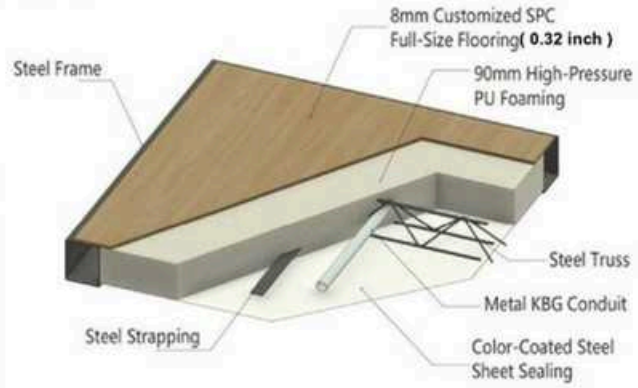
EXTERIOR STEEL OUTWARD CASEMENT DOOR

EXTERIOR WALL

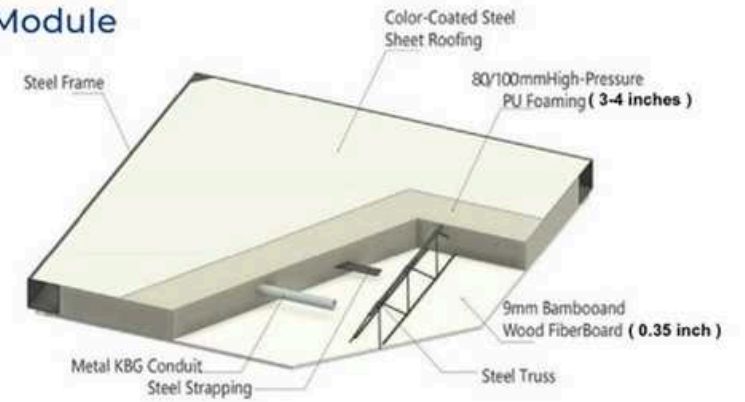
H-SHAPED STEEL BEAM

CUSTOMIZED 114 SCREW PILE

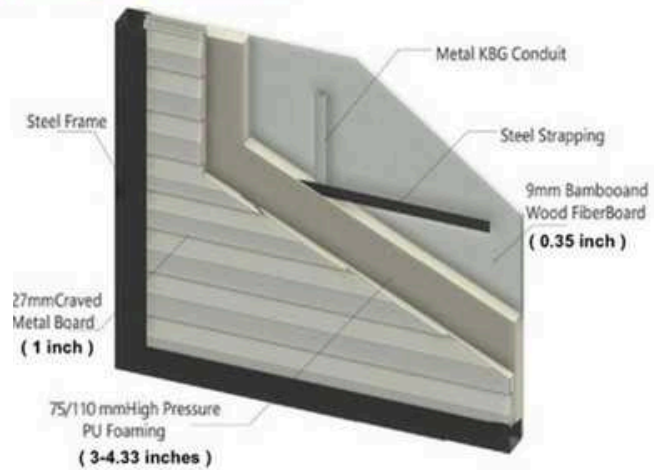
### Floor Module



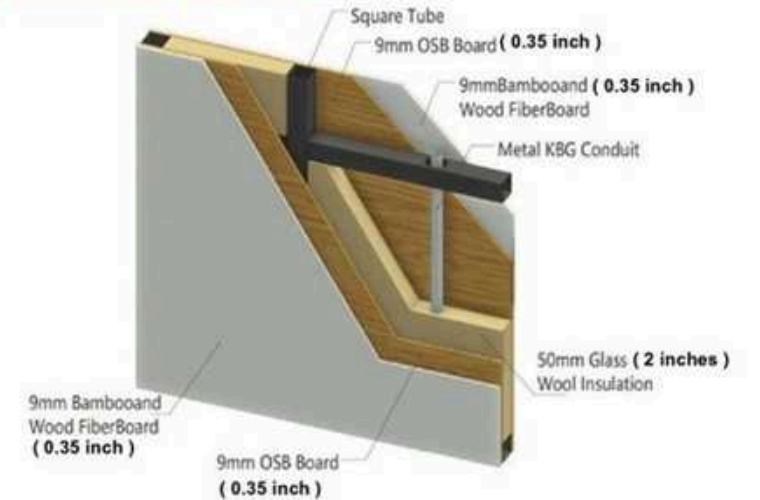
### Ceiling Module



### Exterior Wallboard Module



### Interior Wallboard Module

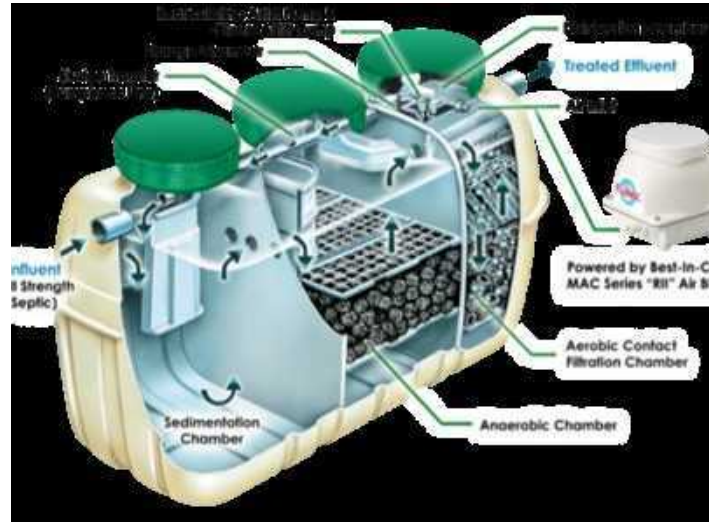


# OFF GRID UTILITIES



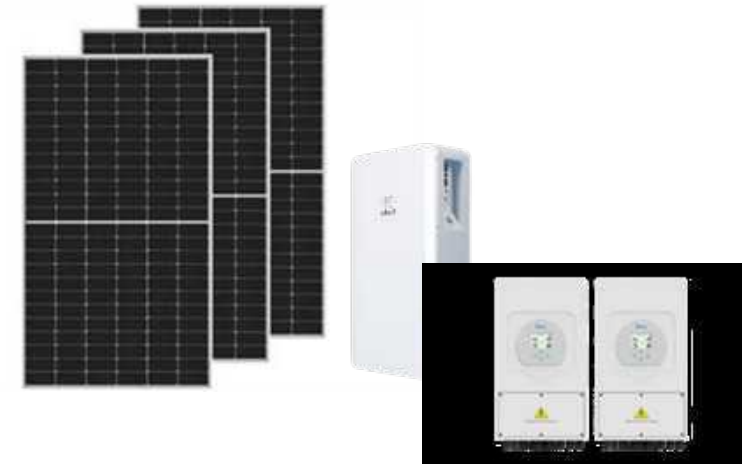
**GREY WATER TREATMENT**

HYDRALOOP



**WASTE WATER TREATMENT**

FUJICLEAN



**5KW SOLAR POWER SYSTEM**

PLAD OFF-GRID

A modern, elevated tiny house with a rooftop deck and stairs, situated on a grassy lawn with trees in the background. The house is built on a dark metal frame and has a light-colored exterior. It features a large set of wooden stairs leading up to a rooftop deck with a glass railing. The house is surrounded by lush green grass and mature trees.

# Creating Communities Building Futures