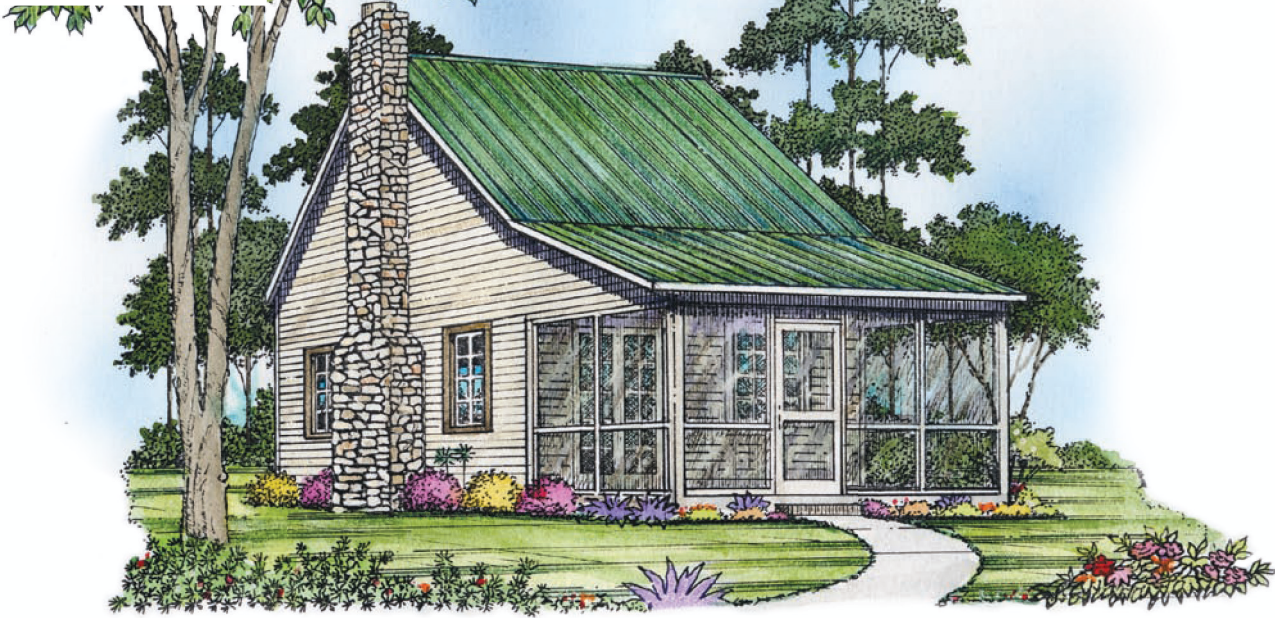
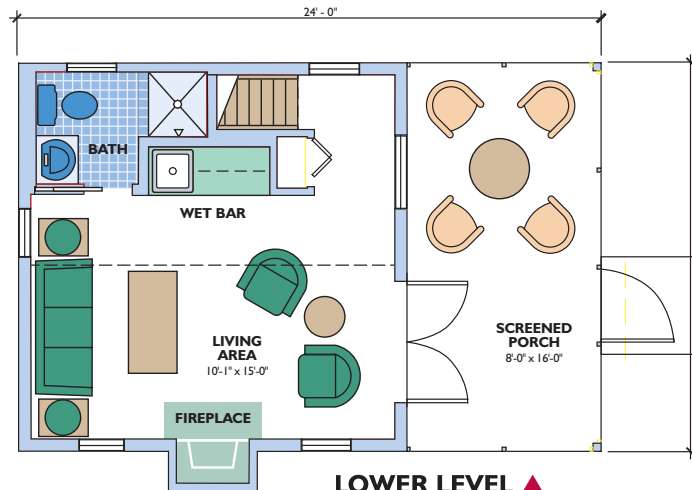


WOODLAND

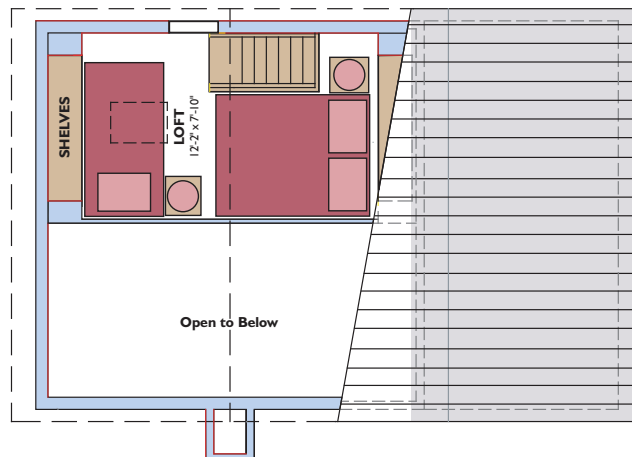
ENERGY WISE HOME
OVERALL DIMENSIONS
24' x 17'-8"



This cozy cabin is perfect for the family vacation retreat. A large screened porch allows you to enjoy the outdoors in any weather. The tall ceiling in the living room creates a feeling of space, and the skylight in the loft lets you enjoy the stars.



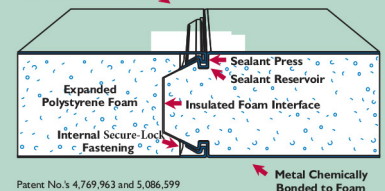
LOWER LEVEL ▲
UPPER LEVEL ▼



Eco-\$mart offers a complete line of pre-cut and pre-engineered home and building packages utilizing structural insulated panel technology (SIPs). All packages erect quickly, are stronger than conventional framing and extremely energy efficient. SIPs can be clad in conventional OSB or in steel incorporating the patented Secure-Lock panel connection.

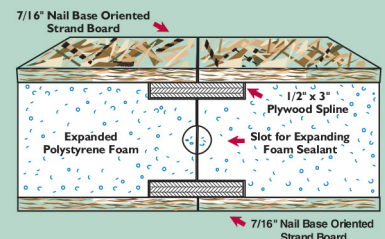
Secure-LockTM Insulated Panel

Your Choice of Aluminum or Steel Skins



Patent No.'s 4,769,963 and 5,086,599

Dual Plywood Spline Joint



Living Area	262 sq. ft.
Loft	133 sq. ft.
Porch	128 sq. ft.
TOTAL	523 sq. ft.

2 story, 1 bedroom,
1 bath

Plans and specifications are subject to change without notice. All dimensions are approximate.

ECO-\$MART, INC

TOLL FREE: (888)329-2705 info@eco-smart.com www.eco-smart.com