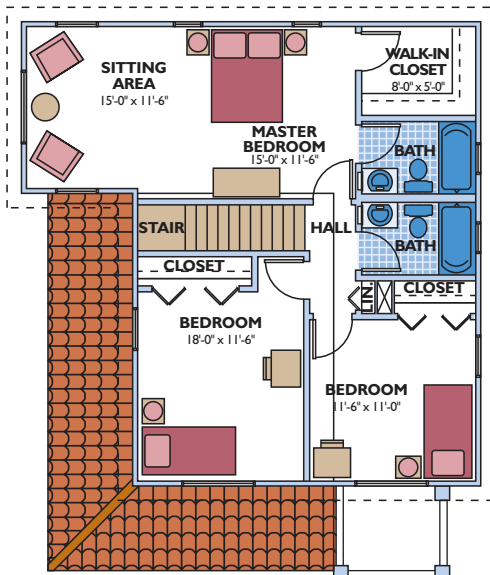


RIO

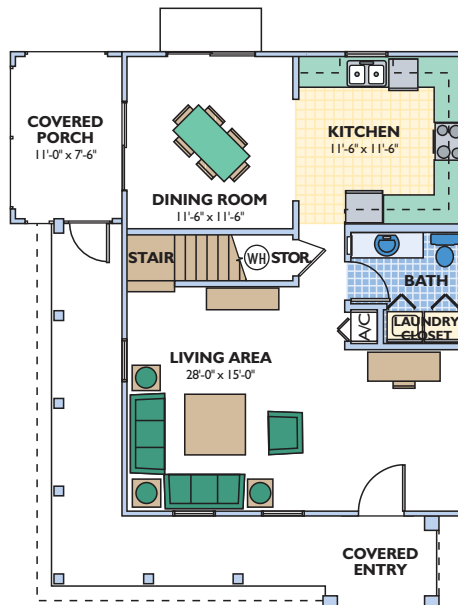
ENERGY WISE HOME

OVERALL DIMENSIONS

31'-8" x 38'-6"



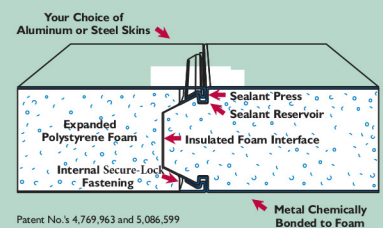
UPPER LEVEL



LOWER LEVEL

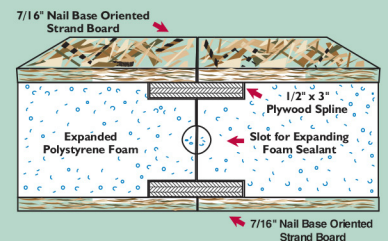
Eco-\$mart offers a complete line of pre-cut and pre-engineered home and building packages utilizing structural insulated panel technology (SIPs). All packages erect quickly, are stronger than conventional framing and extremely energy efficient. SIPs can be clad in conventional OSB or in steel incorporating the patented Secure-Lock panel connection.

Secure-Lock™ Insulated Panel



Patent No.s 4,769,963 and 5,086,599

Dual Plywood Spline Joint



Stucco, columns, archways, window and door accents, and a metal barrel tile roof prove to be the perfect combination in this Spanish style home. All rooms are spacious in design, especially the living area.

Living Area 1,627 sq. ft.
side cov. porch 91 sq. ft.
front cov. entry 233 sq. ft.
TOTAL 1,951 sq. ft.
 2 story, 3 bedroom, 3 bath

Plans and specifications are subject to change without notice. All dimensions are approximate.

ECO-\$MART, INC

TOLL FREE: (888)329-2705 info@eco-smart.com www.eco-smart.com