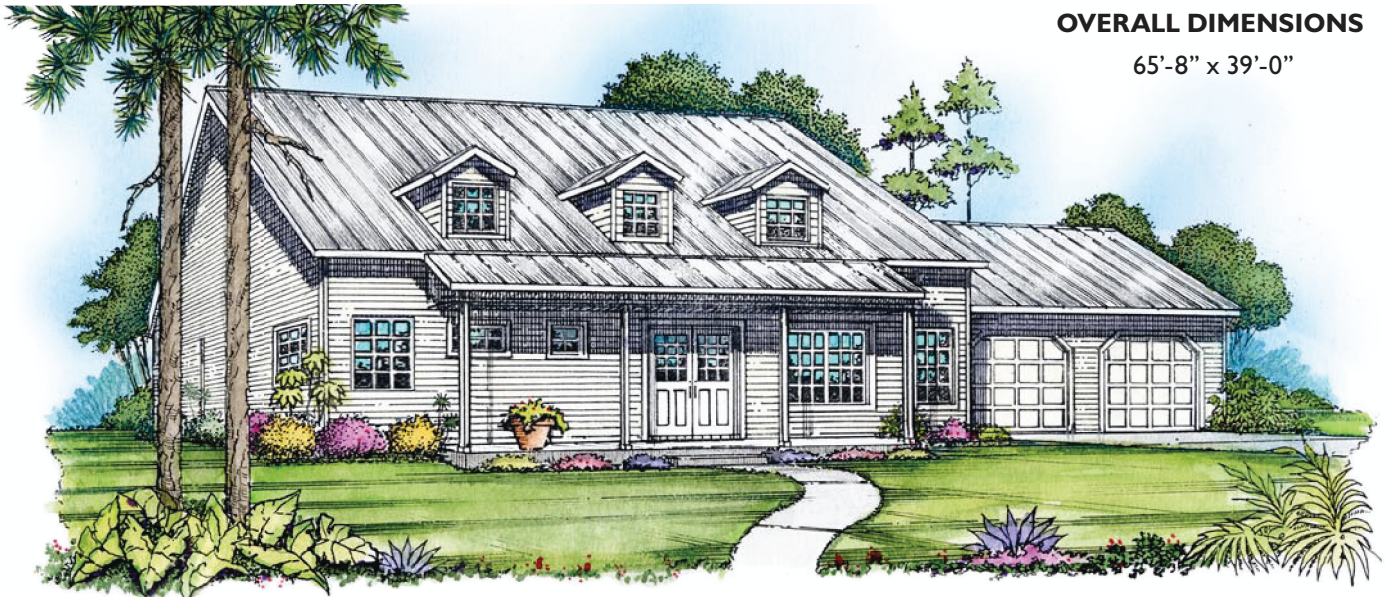


MEADOWBROOK

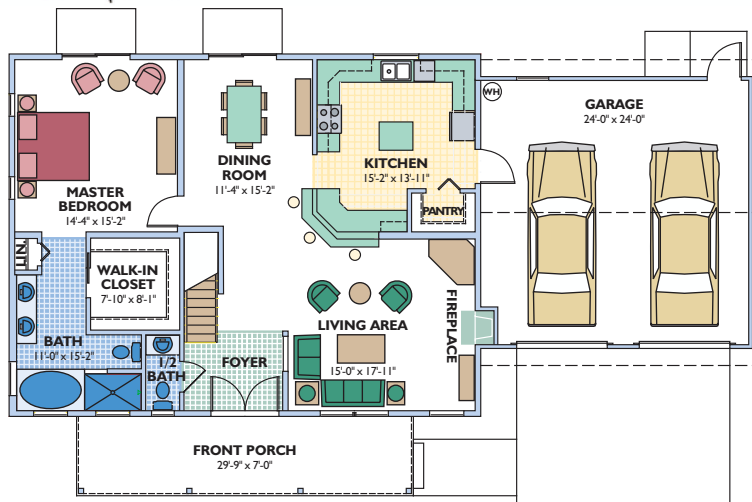
ENERGY WISE HOME

OVERALL DIMENSIONS

65'-8" x 39'-0"



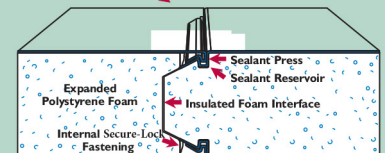
LOWER LEVEL ▶



Eco-Smart offers a complete line of pre-cut and pre-engineered home and building packages utilizing structural insulated panel technology (SIPs). All packages erect quickly, are stronger than conventional framing and extremely energy efficient. SIPs can be clad in conventional OSB or in steel incorporating the patented Secure-Lock panel connection.

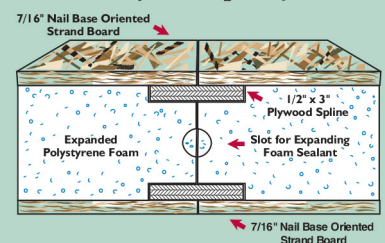
Secure-LockTM Insulated Panel

Your Choice of Aluminum or Steel Skins



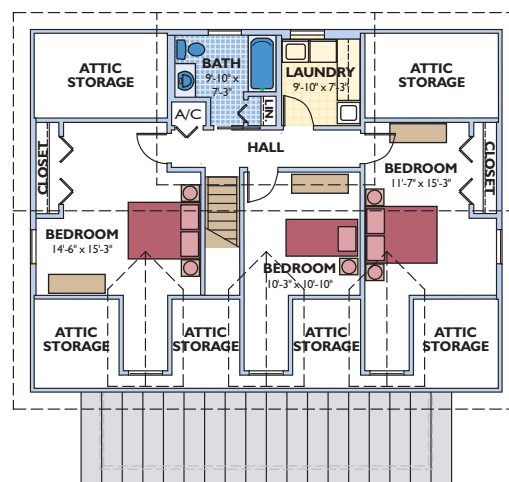
Patent No.'s 4,769,963 and 5,086,599

Dual Plywood Spline Joint



Living Area	2,234 sq. ft.
Garage	571 sq. ft.
Front Porch	209 sq. ft.
Attic	438 sq. ft.
TOTAL	3,452 sq. ft.
4 bedroom, 3 bath 2 car garage	

UPPER LEVEL ▼



This large, country-style farmhouse has distinguishing dormers and a large covered front porch. The inside floor plan features a very large kitchen with an island and breakfast bar. The large living area flows into the dining and kitchen areas. Ample attic storage space completes the design.

Plans and specifications are subject to change without notice. All dimensions are approximate.

ECO-SMART, INC

TOLL FREE: (888) 329-2705 info@eco-smart.com www.eco-smart.com