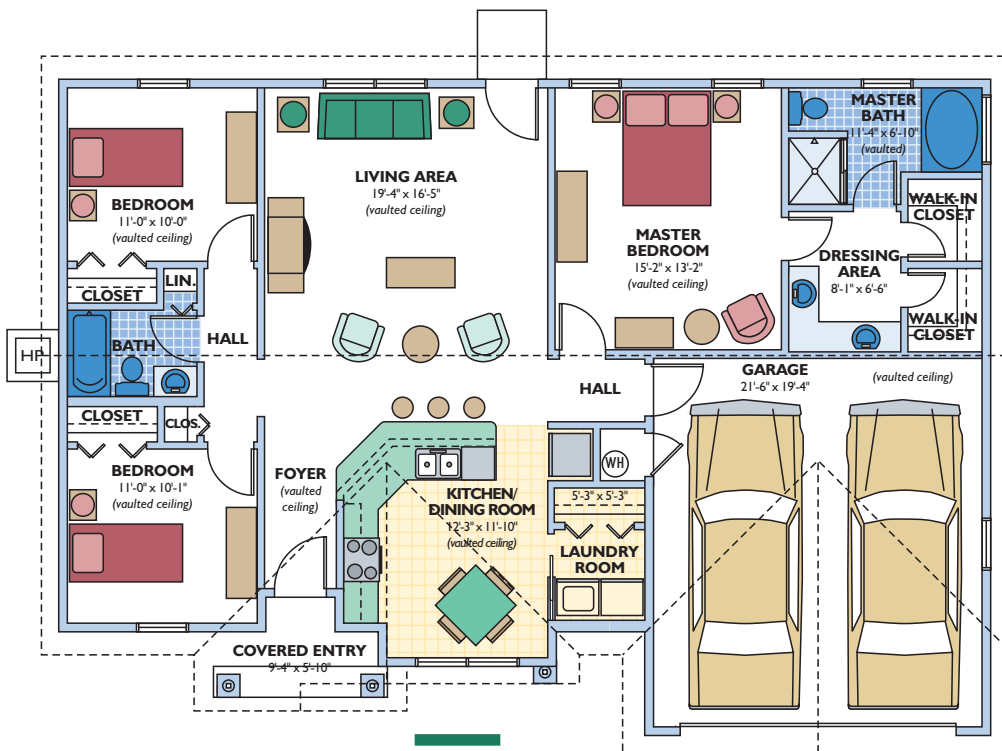
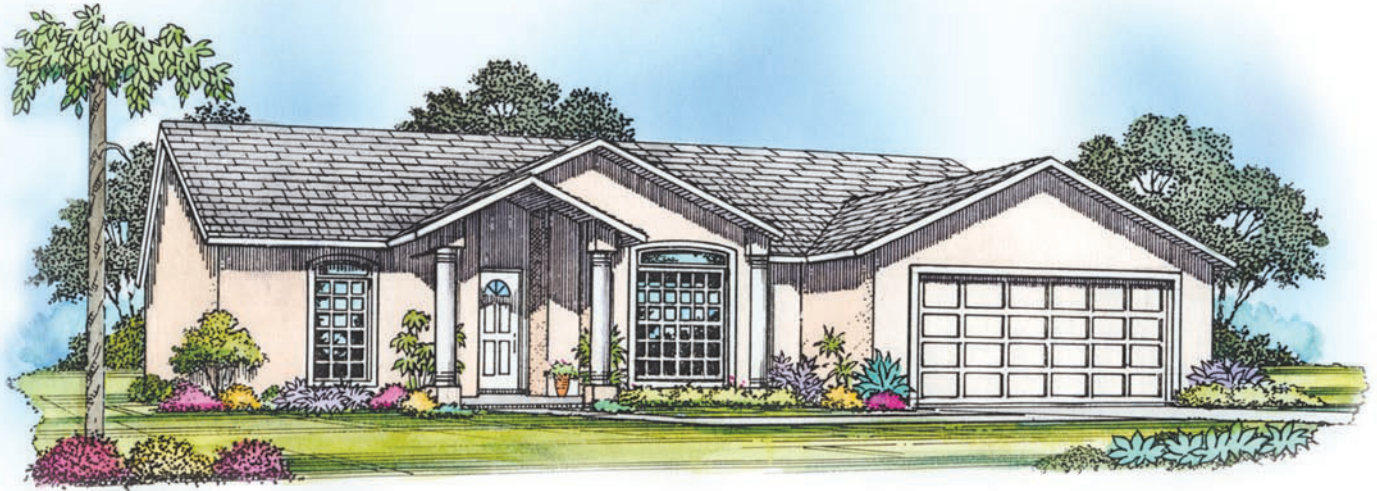


CAMERON

ENERGY WISE HOME

OVERALL DIMENSIONS

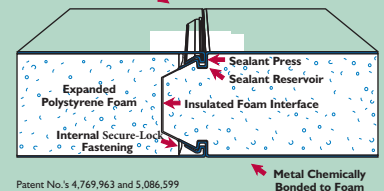
38'-0" X 54'-0"



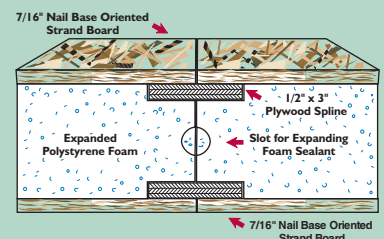
Eco-\$mart offers a complete line of pre-cut and pre-engineered home and building packages utilizing structural insulated panel technology (SIPs). All packages erect quickly, are stronger than conventional framing and extremely energy efficient. SIPs can be clad in conventional OSB or in steel incorporating the patented Secure-Lock panel connection.

Secure-LockTM Insulated Panel

Your Choice of Aluminum or Steel Skins



Dual Plywood Spline Joint



The vaulted entry creates initial impact and somewhat secludes the view of the rest of the house. As you enter the living area, you'll notice its sheer size offers a lot of room for furniture options and placement. The master bedroom is also very spacious and has a dressing area.

Living Area 1,426 sq.ft.
Front cov. entry 46 sq.ft.
Garage 437 sq.ft.
TOTAL 1,909 sq.ft.

3 bedroom, 2 bath,
 2 car garage

Plans and specifications are subject to change without notice. All dimensions are approximate.



ECO-\$MART, INC

TOLL FREE:(888)329-2705 info@eco-smart.com www.eco-smart.com