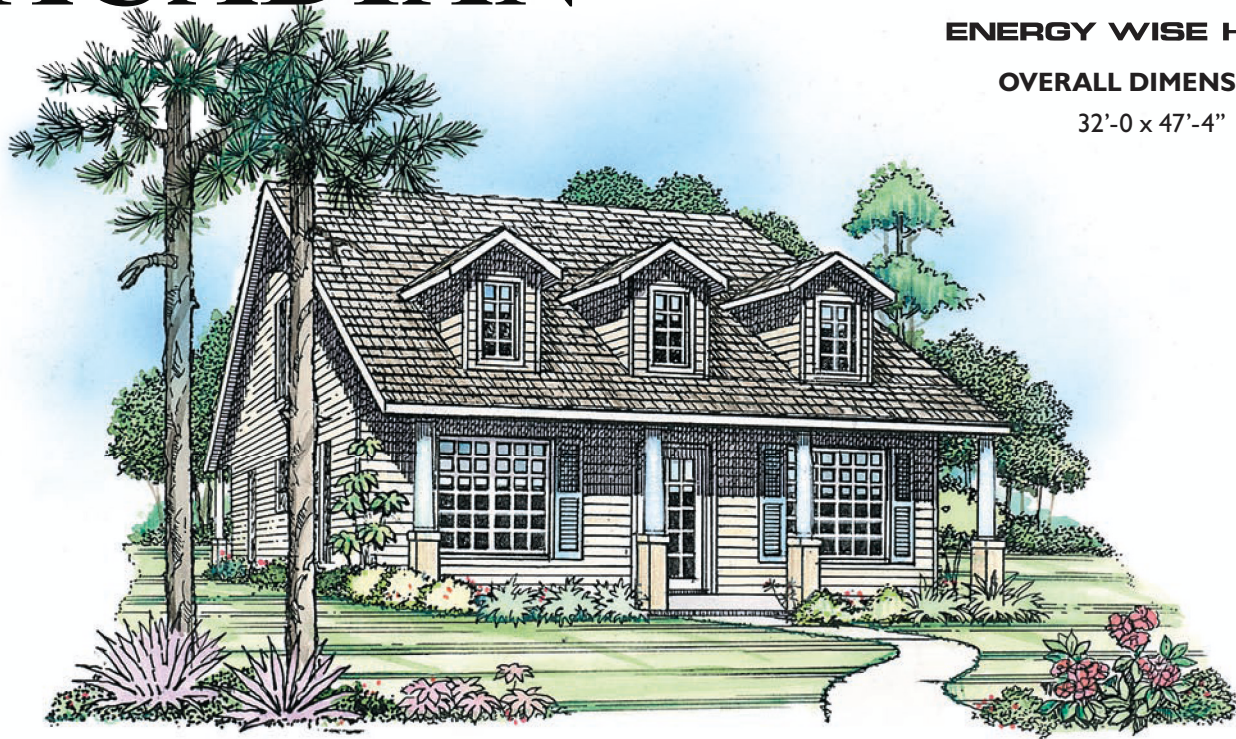


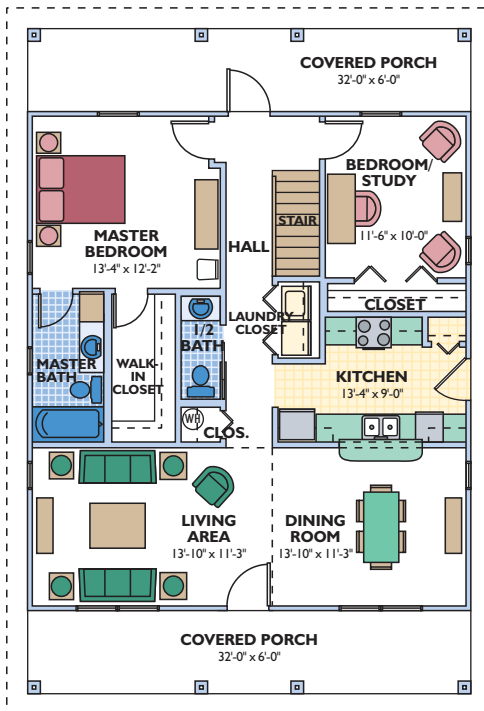
# ACADIAN



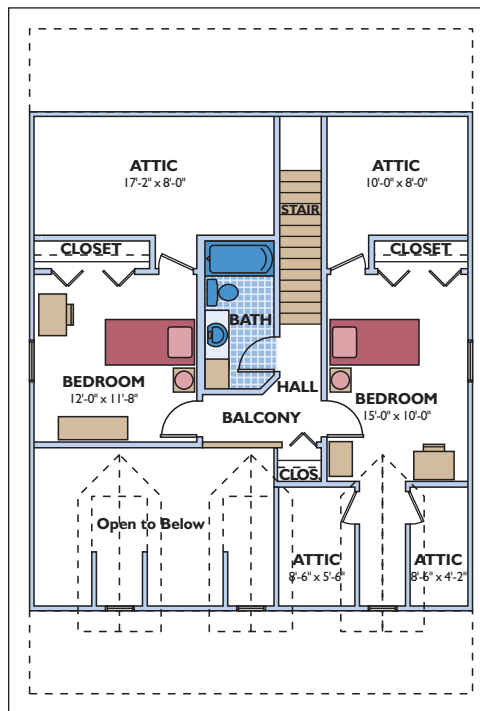
ENERGY WISE HOME

OVERALL DIMENSIONS

32'-0" x 47'-4"



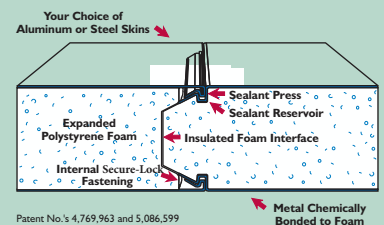
LOWER LEVEL



UPPER LEVEL

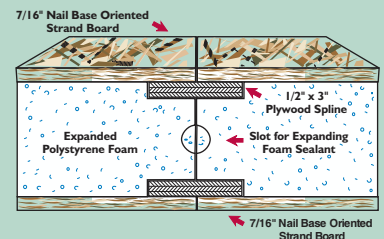
Eco-Smart offers a complete line of pre-cut and pre-engineered home and building packages utilizing structural insulated panel technology (SIPs). All packages erect quickly, are stronger than conventional framing and extremely energy efficient. SIPs can be clad in conventional OSB or in steel incorporating the patented Secure-Lock panel connection.

## Secure-Lock™ Insulated Panel



Patent No's 4,769,963 and 5,086,599

## Dual Plywood Spline Joint



*This floor plan has a little something to please everyone, and of course the storage space in the four attic accesses is unbeatable*

**TOTAL LIVING AREA - 1,685 SQ. FT.**

*4 bedroom, 2-1/2 bath*

*Plans and specifications are subject to change without notice. All dimensions are approximate.*

**ECO-SMART, INC**

TOLL FREE: (888) 329-2705 info@eco-smart.com www.eco-smart.com