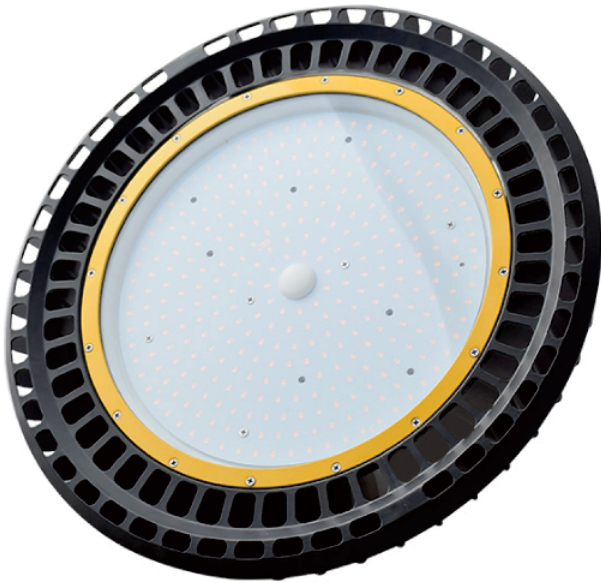


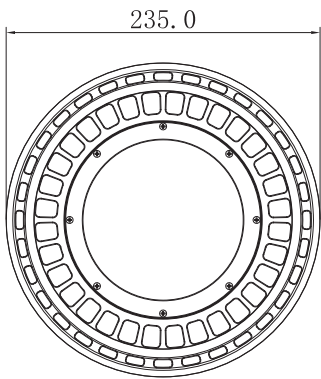
UFO LED High Bay Light

UFO-

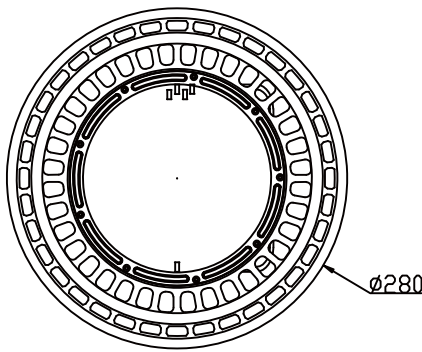
This UFO high bay is widely to use in warehouse, factory, workshop etc., Application for every place you can image.



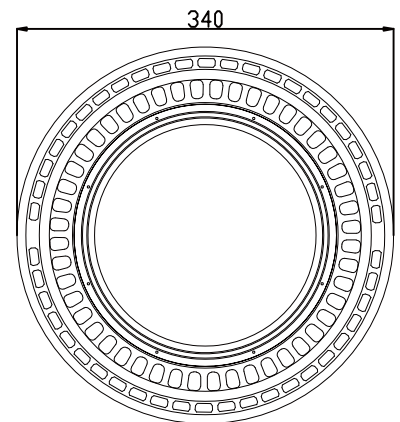
Dimension (mm)



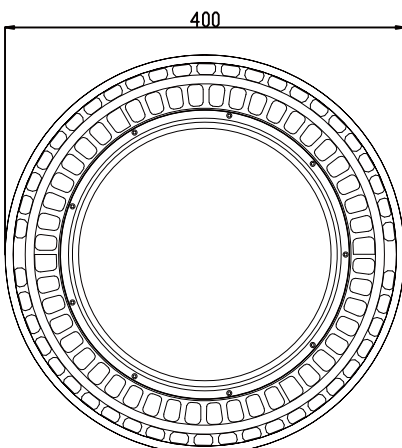
60w



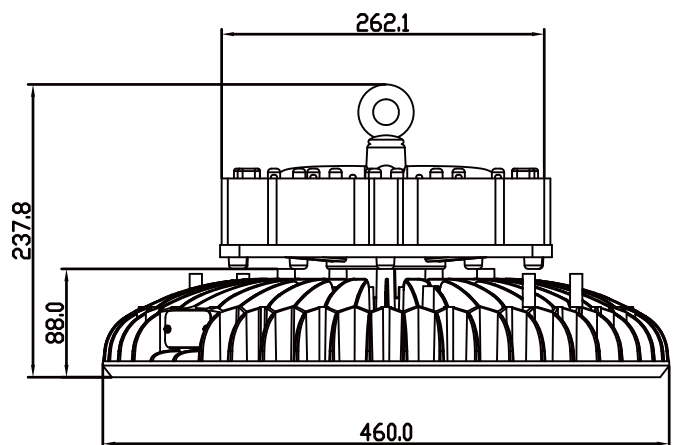
100w



160w



240w



300w

Why us?



Our UFO Light 60-300w, by improving the heat sink thermal function and the driver performance, we can save more energy with reliable quality.

Would you like to save more money



From our 5 years experience, many clients has problem with these High bay in the current market, most failures can be bolt down to heat problem or driver problem. However, we are making the change to improve. It's credit!



Microwave sensore + dimming

Light sensor & dimming

The lamp lights on 100% illumination or dims maintain the preset illumination level against ambient light

The lamp dims to minimum light level but never turn off even if with sufficient ambient light



Microwave sensor & dimming

When used in combination with 1-10V dimmable LED drivers and ballasts, the sensors can achieve 3-step dimming function, 100%---> low light---off. And the sensors build in adjustable daylight sensors, very easy to install and cost-effective.



With sufficient ambient light, the sensor does not switch on the lamp.

With insufficient ambient light, the sensor switches on the lamp when motion is detected

After hold time, the sensor dims the lamp at a low light level if no new motion trigger.

After stand-by period, the sensor switches off the lamp if no motion is detected in its detection zone.

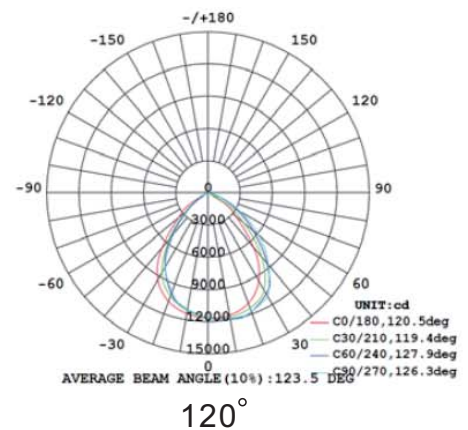
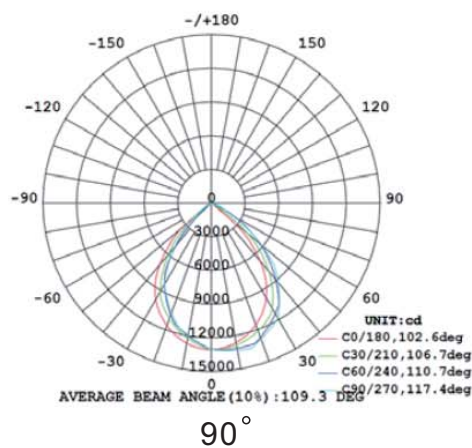
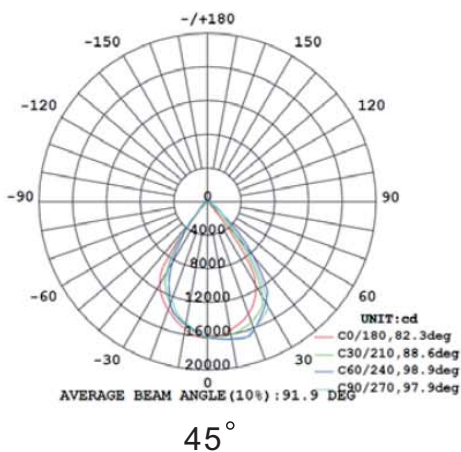
Specification data

Item No.	Rated Power	Input Voltage	Power Factor	Replacement	Luminous Flux	CRI
UFO-60W	60W	100-277VAC	PF>0.95	175-250W HID, CFL	7,800lm	Ra>83
UFO-100W	100W	100-277VAC	PF>0.95	400-450w MH, HPS	13,000lm	Ra>83
UFO-160W	160W	100-277VAC	PF>0.95	450-600w MH, HPS	20,500lm	Ra>83
UFO-240W	240W	100-277VAC	PF>0.95	600-750w MH, HPS	31,000lm	Ra>83
UFO-300W	300W	100-277VAC	PF>0.95	1000-1200w MH, HPS	39,000lm	Ra>83

- Color temperature: 3000k, 4000k, 4500k, 5000k, 5700k, 6500k
- Life time: >50,000 hours
- Warranty: 5 years factory warranty



Light Distribution curve



Applications

- High/Low Bay Lighting/Sports Lighting/Factories Lighting
- Residential /Institution Buildings/Major halls
- Other applications

