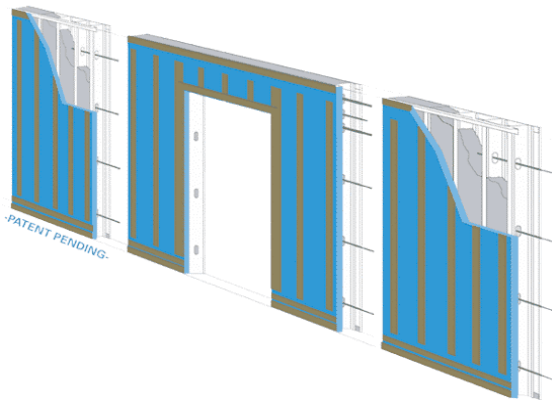




## E-Wall Stay-in-Place Forms for Poured Solid Concrete Walls

E-Wall is a patented stay-in-place form for building solid concrete walls. The form consists of an exterior fiber/gypsum board held to an interior rigid foam insulation board. Light gauge steel studs hold the interior and exterior boards together. Furring strips are provided on the interior facing side of the insulation board surface. Vertical re-bar (poured in the slab) connects the panels to the foundation, and horizontal re-bar is placed every 2' in height in the form prior to the concrete pour. Once the forms are poured, the walls are ready for conventional electrical placement and drywall installation using the furring strips provided. Conventional exterior finishes such as stucco or siding can be directly applied.

E-Wall construction creates highly insulated, low air infiltration, moisture resistant, extremely strong (250mph wind load / Miami Dade Approved), fast, and affordable (competitive with standard concrete block) construction.



**For more information, call Eco-Smart, Inc. at 888-329-2705.**

All Eco-Smart products are approved by the nonprofit Florida House Institute for Sustainable Development [www.i4sd.org](http://www.i4sd.org).